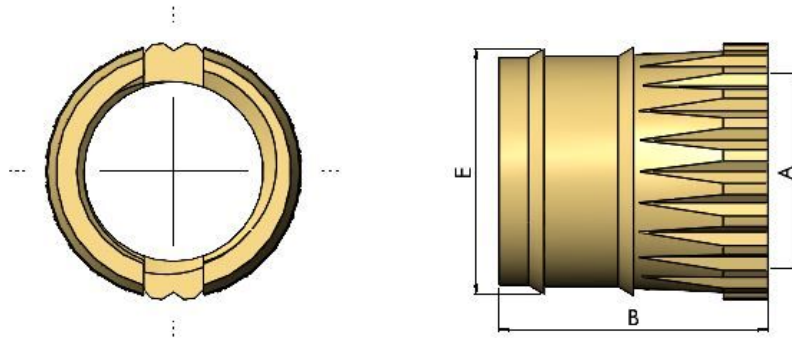




Series: 20110 Type: SF



Expansion Inserts

Part No.	Thread A	Max. Ext.Dia.E	Length B	No. splined fin	Hole Diam. L
SF020H035	M2.0	3.90	3.50	1	3.4 - 3.5
SF025H040	M2.5	4.40	4.00	1	3.9 - 4.0
SF030H050	M3.0	5.50	5.00	1	4.9 - 5.0
SF030H080	M3.0	5.50	8.00	2	4.9 - 5.0
SF040H050	M4.0	6.50	5.00	1	5.9 - 6.0
SF040H080	M4.0	6.50	8.00	2	5.9 - 6.0
SF050H060	M5.0	7.60	6.00	1	6.9 - 7.0
SF050H090	M5.0	7.60	9.00	2	6.9 - 7.0
SF060H070	M6.0	8.60	7.00	1	7.9 - 8.0
SF060H090	M6.0	8.60	9.00	2	7.9 - 8.0

SF inserts are recommended for Wood and Composite applications. Their geometric shape and sharp fluted fins eliminates any danger of the substrate splitting. They provide lower screw installation torque than the FV type due to the fluted fins. Different materials may require slight modifications to the hole dimensions stated and it is essential that the hole depth is sufficient to allow the screw to pass completely through the insert to achieve optimum xpansion.

All information is given for guidance only and designers should satisfy themselves as to the suitability of the specification by requesting samples