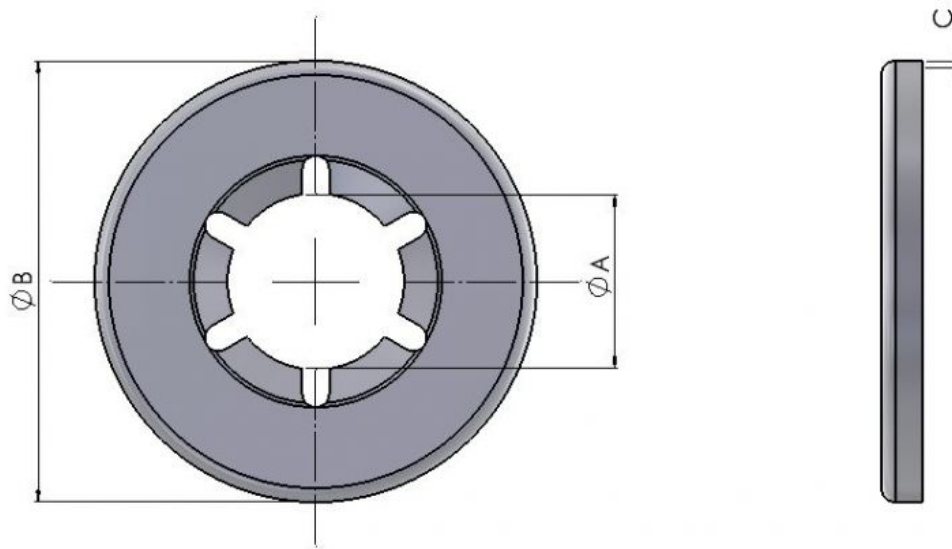




Series: 40401 Type: POF

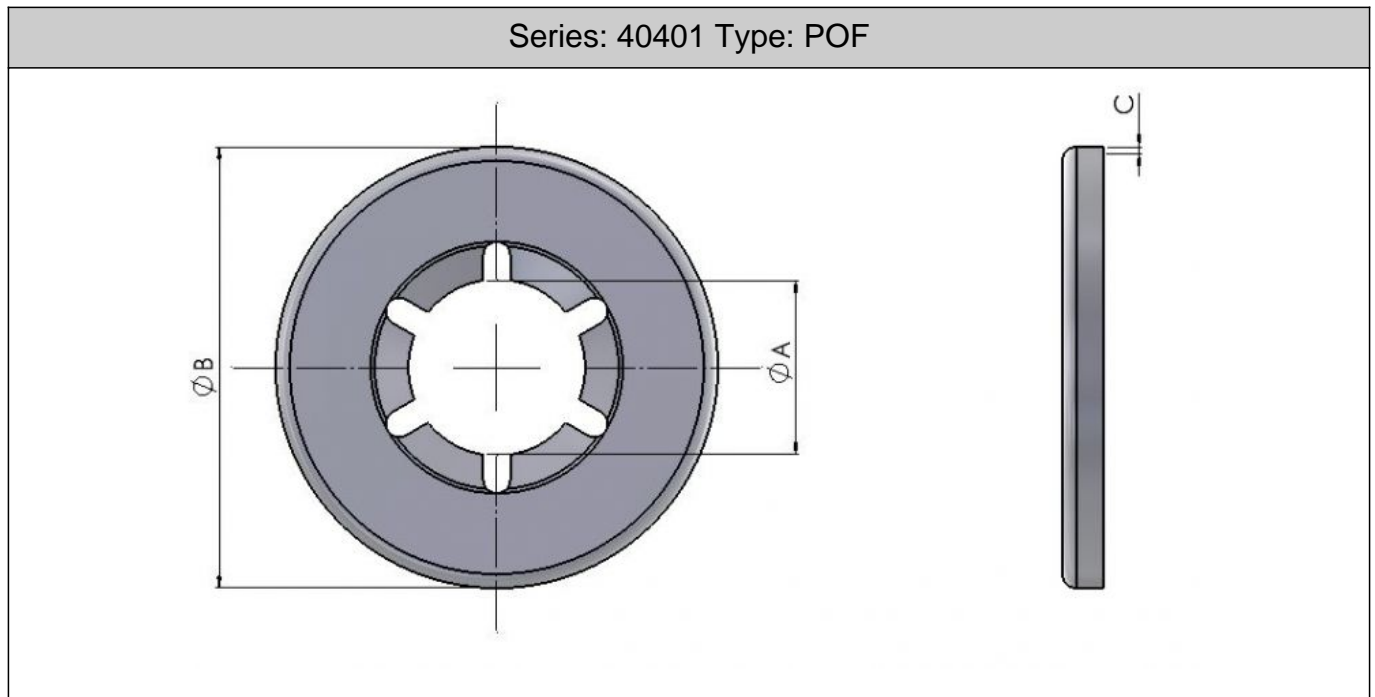


### Metric Round Push on Fix

| Part No. | Shaft Size A | Dim B | Dim C |
|----------|--------------|-------|-------|
| 8004     | 1.5          | 9.7   | 0.2   |
| 6489     | 2.0          | 9.7   | 0.2   |
| 6490     | 3.0          | 9.7   | 0.2   |
| 6492     | 4.0          | 11.5  | 0.2   |
| 6491     | 5.0          | 11.5  | 0.2   |
| 6493     | 6.0          | 15.25 | 0.25  |
| 6703     | 7.0          | 15.25 | 0.25  |
| 6704     | 8.0          | 15.25 | 0.25  |
| 6708     | 9.0          | 18.4  | 0.3   |
| 6496     | 10.0         | 18.4  | 0.3   |
| 6706     | 11.0         | 18.4  | 0.3   |
| 6713     | 12.0         | 25.0  | 0.4   |
| 6829     | 13.0         | 25.0  | 0.4   |
| 6825     | 14.0         | 28.2  | 0.4   |
| 6714     | 15.0         | 28.2  | 0.4   |
| 6826     | 16.0         | 28.2  | 0.4   |
| 6715     | 17.0         | 28.2  | 0.4   |
| 6827     | 18.0         | 36.5  | 0.4   |
| 6828     | 19.0         | 36.5  | 0.4   |
| 6716     | 20.0         | 36.5  | 0.4   |
| 6830     | 21.0         | 36.5  | 0.4   |
| 6719     | 22.0         | 36.5  | 0.4   |
| 6831     | 23.0         | 38.1  | 0.45  |



Continued from previous page...



|      |      |      |     |
|------|------|------|-----|
| 6832 | 24.0 | 41.3 | 0.5 |
| 6717 | 25.0 | 41.3 | 0.5 |

Push on fixes provide a strong fixing on round shafts. Common applications are for retaining wheels or bearings but the possibilities are endless. They are also available with caps.

Material: C67S (stainless steel also available to order)

Finish: Clear Laquer (Code 00) or Mechanical Zinc (Code 60)

**All information is given for guidance only and designers should satisfy themselves as to the suitability of the specification by requesting samples**