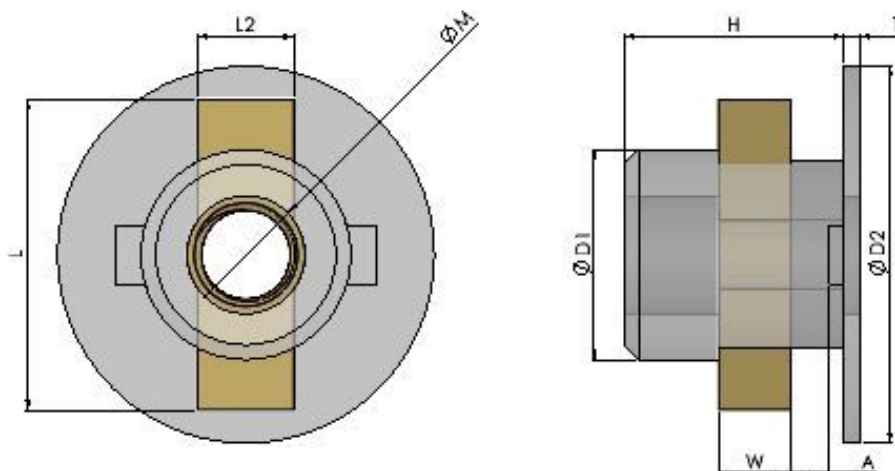




Series: 50505 Type: AN



## Anchor Nuts

Part No.	Thread M	L	W	d1	d2	H	T	a	d3	L1	L2
AN080	M8	21.0	4.9	14.2	25.5	14.9	1.1	3.6	14.3	22.0	6.5
AN060	M6	14.0	3.8	10.2	18.0	11.1	0.9	2.5	10.3	14.5	4.4
AN050	M5	13.0	3.5	9.2	16.5	8.1	0.9	1.8	9.3	13.5	4.4

Anchor Nuts consist of a steel zinc plated nut in a nylon or steel cage. They offer a simple but effective fastening solution for thin materials. It is installed by placing the wings on the nut into the special hole and then turned through 90°. When the screw is tightened the wings then clamp the plate. The special hole can be drilled then clipped out with a hand-clipping tool. For larger volume applications the required hole should be punched. Materials & Finishes:-Cage Nylon 66 Nut Steel Trivalent Zinc To specify use Series Code / Part No/ (eg 50505 AN060)

**All information is given for guidance only and designers should satisfy themselves as to the suitability of the specification by requesting samples**